

Huntington County Cattlemen's 32nd Annual Preview Steer & Heifer Show

This will be an IJBCA Indiana's
Finest Sanctioned Show

March 19, 2016

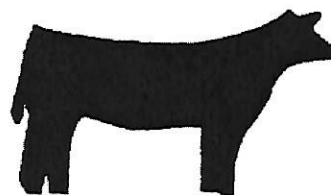
Huntington County Fairgrounds -
Huntington Indiana
(Map on back)

Open Show Entry Fee - \$40
Showmanship Fee - \$10

Showmanship Classes will be first.
Premiums determined by number in class.

Whitley County Steer & Heifer Show
is on Sunday, March 20, 2016

- Only 25 minutes north of
Huntington
- Call 260-625-3313 for more
information



RULES - All Calves

You are encouraged to bring your Premise ID number

1. No Cattle unloaded before 9 am or after 10 pm 3/18/16
2. Cattle will be weighed in from 4-10 pm 3/18/16
3. Show starting - 10 am Saturday, March 19.
4. Only cattle from outside of Indiana must have current health papers.
5. Weigh-in on Sat. March 19 from 7-8 am.
6. Class size will not exceed 10 calves.
7. Steers shown by weight and breeds.
8. Heifers shown by age and breed; commercial by weight.
9. There will NOT be a Market Heifer Class.
10. Cattle breeds - must be 3 animals per breed (in both steer and heifer classes).
11. Show order - breeds show in alphabetical order (purebreds), all other breeds, crossbred. Heifers show first - youngest to oldest.
12. No powders allowed. No pumping or artificial filling allowed.
13. Committee reserves the right to evaluate any animal for breed.
14. Showmanship Classes will be offered.

Steer & Heifer Awards

Grand Champion—\$500
Reserve Grand—\$250

Awards for Top 5
Steers & Heifers

Breed Champions—\$30 Certificate
Breed Reserves—\$20 Certificate

JUDGE—Jake Boyert

FOR MORE INFORMATION

MATT TYNER - 260/468-2500
ROBERT MAUTZ - 260/758-2894

LOCAL MOTELS

NORTHVIEW INN & SUITES-(260)359-9000
HOLIDAY INN EXPRESS - (260) 356-3434
HUNTINGTON INN - (260) 359-8989
HUGGY BEAR - (260) 375-2505
SUPER 8 MOTEL - (260)358-8888