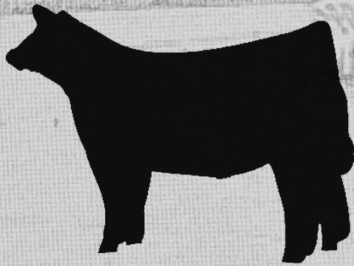


Mt. Pleasant



SHOW DOWN

2016



Sponsored by:

Muskingum Livestock - Denny Ruff, Mgr.,
Fairfield County Cattlemen's Association
Show Rite Feeds/Direct Feed Sales -
Dennis Miller

30TH ANNUAL OPEN CLASS "MT. PLEASANT SHOW DOWN"

FEEDER CALF SHOW

Judge: Jake Osborn

Saturday, October 15, 2016

Showtime - 1:00 p.m. Entry Fee - \$20.00

Entries will be accepted **ONLY** the day of the show.

Tie space available in Barn #4.

1. All calves must be in place by 9:00 a.m., Saturday, October 15
2. All calves are released following the show.
3. Calves will be weighed at 9:00 a.m.
4. Calves must be sired by a beef bull and out of a good grade beef cow. No dairy breeding accepted.
5. Calves must be dropped after January 1, 2016 and weigh between 300 and 750 pounds.
6. Calves must be castrated. Dehorning is recommended, but not necessary.
7. CALVES MUST BE BROKEN TO LEAD AND SHOW.
8. Limit of 6 steers or heifers per exhibitor.
9. Steers and heifers shown in separate class.
10. NEW - Market Heifers class added if a minimum of 5 head entered. Otherwise market heifers will be shown in steer classes.
11. The beef committee reserves the right to reject any calf that does not meet the physical requirements as to size, age, quality, castration, etc.
12. Classes will be determined by weight.
13. Out of state cattle must present Health Certificate from Certified Veterinarian according to ODA regulations.

PREMIUMS: \$45, \$38, \$35, \$32, \$30, \$25, \$20

Grand Champion Market Prospect- \$450	Grand Champion Heifer- \$300
Reserve Champion Market Prospect- \$300	Reserve Champion Heifer- \$250