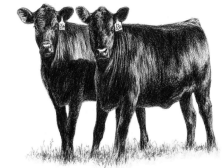


# Pike County

## 1st Annual Fall Show Cattle Classic October 2, 2016 at Pike County Fairgrounds



Presented by:  
Pike County Fair Board  
Show Committee and



**Judge - Terry Muir**

**ONSITE**

311 Mill Street  
\* Show Supplies \*  
Piketon, Ohio 45661  
Food Vendors  
Camping \$25.00 a night  
For More Information Contact  
Chris Brun (740) 825-1300  
Ameristay (740) 241-1678  
Lyle Rice (740) 222-2174  
Lindsay Bennett (937) 423-2141

**For Camping Contact**

Mary Conley (740) 708-0303

Not Responsible for lost or stolen items  
Not Responsible for accidents  
All decisions of the Show Committee are  
final  
Pike County Agricultural Society

### General Information Limit

### 800 lb. Weight

All cattle must meet the requirements of ODA's Revised Code. Health papers are required for Out-of-State Cattle Steers and Heifers are to be born on or after Jan. 1, 2016 All cattle must be in place by 10 a.m., Sunday , Oct. 2, 2016

Weigh-In: Saturday, October 1st, 8-10 p.m.  
Sunday, October 2nd, 8-10 a.m.

Entry Fee: Breeding & Market, \$30.00  
Showmanship, \$5.00

Showmanship starting at 11:00 a.m.

Breeding and Market Show to follow

**\$1750 Guaranteed Prize Money**

### Feeder Steer/Market Heifer Feeder Heifer Show

<b>Champion \$350.00</b>	<b>Champion \$350.00</b>
<b>Reserve \$250.00</b>	<b>Reserve \$250.00</b>
<b>3rd Place \$150.00</b>	<b>3rd Place \$150.00</b>
<b>4th Place \$75.00</b>	<b>4th Place \$75.00</b>
<b>5th Place \$50.00</b>	<b>5th Place \$50.00</b>

**Free Stall Space, Must Furnish Your Own Bedding**

**All decisions of Show Committee are FINAL**